

Slow Scan LCD Monitor

The 29LM261A51UN series of 26" LCD monitors has been designed primarily for Slow Scan Legacy Systems as replacements for 28" CRT monitors. They utilise modern WXGA TFT panels and a KME designed Analog-Digital interface board. All elements, including a toughened glass protection screen, have been packaged in a rugged metal housing. The AC power supply is integrated in the monitor head.

Public Information and Process Control systems may be able to use the full width of this 16:9 screen. If 4:3 aspect ratio information is displayed the picture will be the same size as on a 21.3" LCD monitor. High brightness and exceptional viewing angles make this 26" a unique solution to many CRT Replacement problems. Some common Slow Scan Signal timings are factory pre-set. New ones may be added on request. Other signals, which are close to those listed (see table below), will give a display but some adjustment may be necessary for full screen performance.

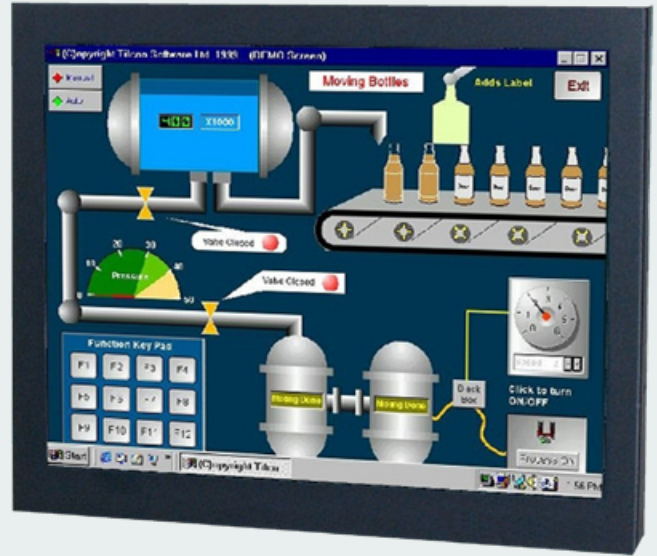
Features

- Specially designed for Legacy CRT replacement
- Widescreen (16:9) formats up to WXGA resolution
- TTL, Analog & Interlaced Signals accepted
- BNC, 9-D & 15-D Connectors
- Rugged Metal Construction with Good Stability

Slow Scan Support - examples

H. kHz	V. Hz	Pixels	H. kHz	V. Hz	Pixels
15.625	50	714 * 288	15.63	50	560 * 275
15.63	60	808 * 238	15.72	60	564 * 240
15.72	60	508 * 240	15.72	60	604 * 240
15.72	60	640 * 200	16.10	50	564 * 304
16.276	70	640 * 220	16.79	70	577 * 215
17.85	50	508 * 338	21.83	60	640 * 350
20.65	50	640 * 384	24.78	60	640 * 384

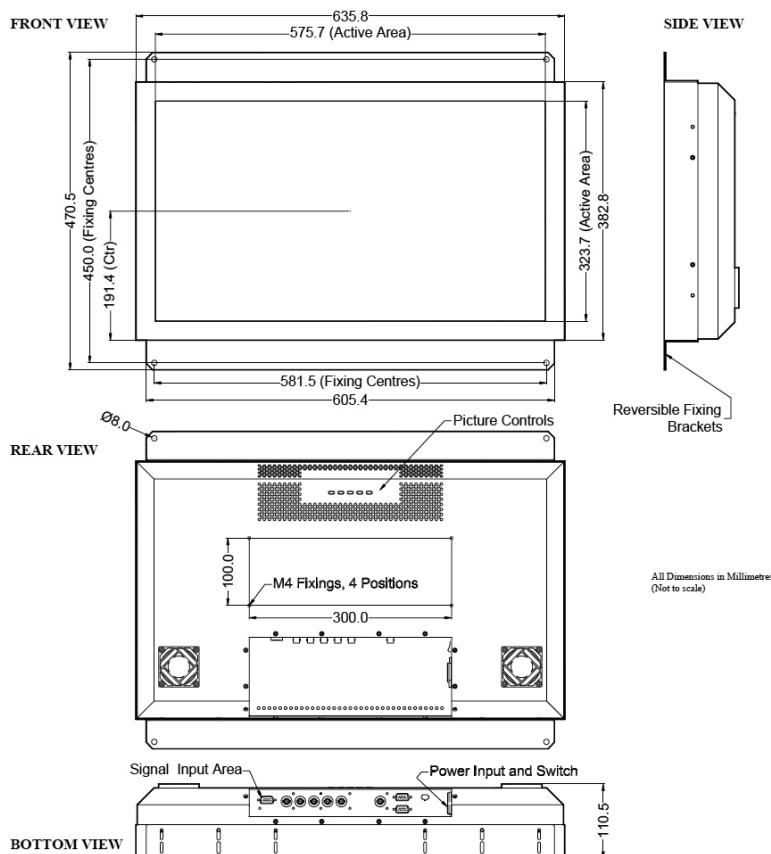
*26" CRT Replacement
LCD Monitor Head
29LM261A51UN*



Specifications: see next page

Specifications		
TFT Characteristics	Type Max. Resolution Active Display Area Contrast Ratio Brightness Viewing angles (at CR>10) Backlight life Nr. of colours	AM Colour TFT 1366 x 768 pixels 575.7 x 323.7 mm 800:1 typical 500 cd/m ² typical 170° H, 170° V 50,000 hrs typical 16 million
Sync. Type/Level	Separate H&V (+/-ve) TTL	or Composite (-ve) TTL or Sync-on-Green (-ve) 0.3V
Signal Sync	Analog RGB 0.7-1.0Vp-p OR TTL RGB>2.75Vp-p	
Synchronisation Range	Horizontal scan Vertical scan	15 - 91kHz 40 - 80Hz
Multiscan Support	1366 x 768 WXGA 1280 x 1024 SXGA 1024 x 768 XGA	800 x 600 SVGA 640 x 480 VGA
Slow Scan Support	Pre-programmed Analog or TTL inputs in 15-40kHz range (See table examples on previous page)	
Power supply	90-260V AC 50/60Hz	
Power consumption	90W (Max)	
Environmental	Storage temp. Operating temp.	-20 to 60°C 0 to 50°C
Dimensions	Monitor	636 x 383 x 111 mm
	Weight	15 kg approx
Input	9D, 15D, BNC x 5	
Housing	Painted aluminium	
User controls	Rear mounted	
On screen buttons	Brightness, Contrast, Auto setup Disable, H/V Position, Clock, Clock Phase and Priority	
Part numbers		
Model	29LM261A51UN	

Specifications are subject to change without notice.



• Monitors

- Desktop Monitors
- Large screen Monitors
- Custom-made Monitors
- 19" Rack Mount Monitors
- Rear Mount Monitors
- Monitors for Panel Mount
- Monitors for VESA Mount
- Kiosks
- Accessories

• Monitors – Specific applications

- Stainless Steel Monitors
- Car Displays
- Marine Monitors
- Military Monitors
- Replacement Monitors
- Train Monitors

• Panel PC's

- High Performance Systems
- Custom made Panel PC's
- Low Power Systems
- Extreme environments

• Pointing devices

- Accessories
- Touchpads
- Trackballs
- Trackball Modules
- Joysticks
- Custom made Pointing Devices

• Keyboards

- Desktop Keyboards with or without pointer
- Built-in Keyboards with or without pointer
- Cables & Connectors
- Custom made Keyboards



Mulder-Hardenberg, est. 1927, is the answer to professional demands in the domain of electronic related environments. We don't just sell products. We use our multidiscipline knowledge to provide the best possible solution, designed to your specific interest.

Contact details:

The Netherlands
Mulder-Hardenberg B.V.
Westerhoutpark 1a
2012 JL Haarlem
Tel.: +31 23 531 91 84
infol@mh-h.biz

Belgium, France, Luxemburg
Mulder-Hardenberg N.V.
Hoge Weg 129
B-2940 Stabroek
Belgium
Tel.: +32 3 660 13 20
infobe@mh-h.biz

Germany
Mulder-Hardenberg GmbH
Nordring 13
D-65719 Hofheim/Ts
Tel.: +49 6192 - 97 91 85
infode@mh-h.biz